

LOVE

AND THANKS

*Doug Hyde*



**DOUG HYDE HAS BEEN CREATING ARTWORK WHICH SPEAKS TO OUR HEARTS FOR MANY YEARS, AND HIS MOVING AND SINCERE MESSAGES OF LOVE, FRIENDSHIP AND HOPE HAVE NEVER BEEN MORE RELEVANT THAN THEY ARE TODAY.**

Life is not an easy journey at the moment, but with Doug as a travelling companion we can reflect on the good things that we are holding on to, gratitude, generosity and love - the things that bind us together and bring us joy along the way.







## LOVE FROM A DISTANCE

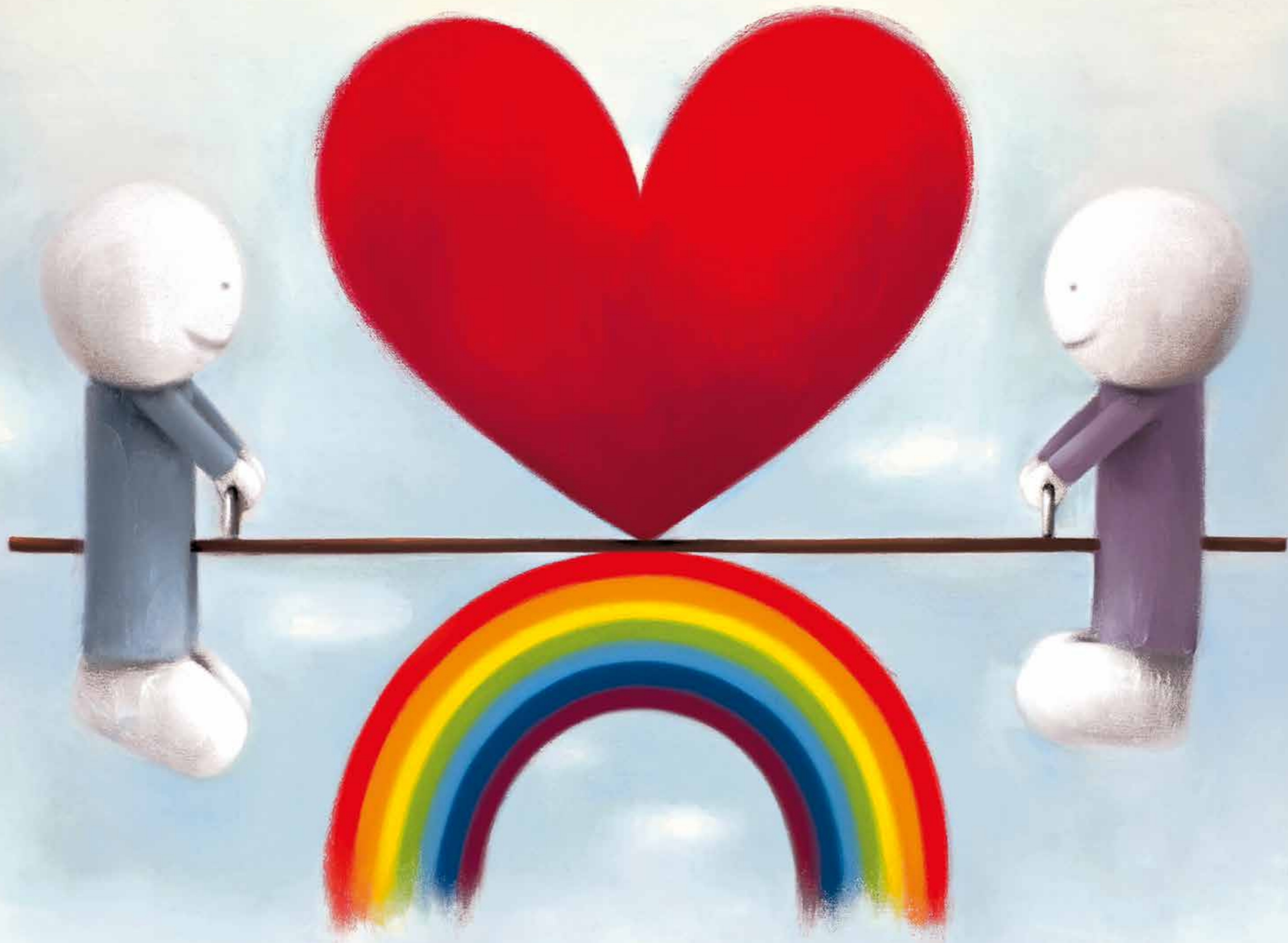


As you probably know, some of my artwork is about celebrating the love we share, but this piece is a little bit different and has grown out of the challenging situation we find ourselves in at the moment, where we have had to realign our social attitudes. A few weeks ago, I received a drawing from a young boy called Jack which perfectly captured the situation we find ourselves in having to - 'Love from a Distance'. It was such a beautiful drawing it inspired me to recreate the artwork. I'm dedicating it to all of you who are keeping your distance from those you love - this is a way we can show our love for each other, and in the end, will bring us closer together. I hope you agree that love from a distance can still be a wonderful and uplifting experience.

Limited Edition of 595

21" x 14"

£475





## THANK YOU

"This sculpture partner piece to the print of the same name, celebrates the attitude and generosity of our frontline carers and NHS workers with a group of figures clapping against the backdrop of the rainbow which has become such an important symbol of optimism for our time. It represents the love that I believe we all feel towards those awe inspiring individuals, and offers them a heartfelt thank you."

Cold Cast Porcelain Edition of 999

10 x 7 x 8"

£495





“Many of us have been re-evaluating what’s important to us over the last few weeks – I know I have – and most of the people I talk to seem to agree that it’s the love of family and friends. The connection between us and the ones we love is always strong, but I think recent events have forged these bonds in steel as well as creating many new ones.

This collection expresses the love we feel for one another and the gratitude we feel towards our NHS workers and frontline carers.”

*Doug Hyde, June 2020*



The Doug Hyde team would like to offer a round of applause to all the brave and inspirational frontline carers working so hard to keep us safe.

With

**LOVE**  
AND THANKS

Doug Hyde